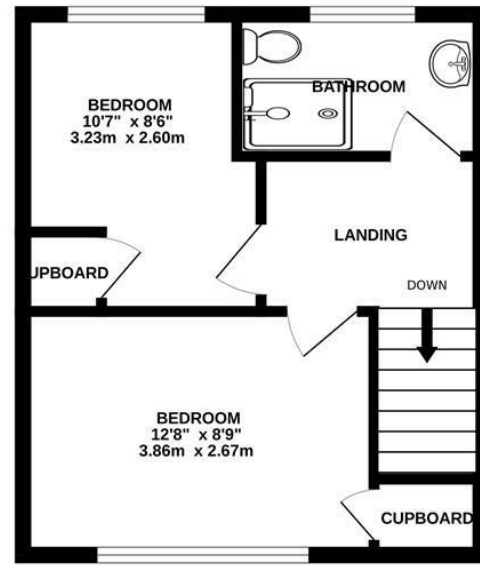
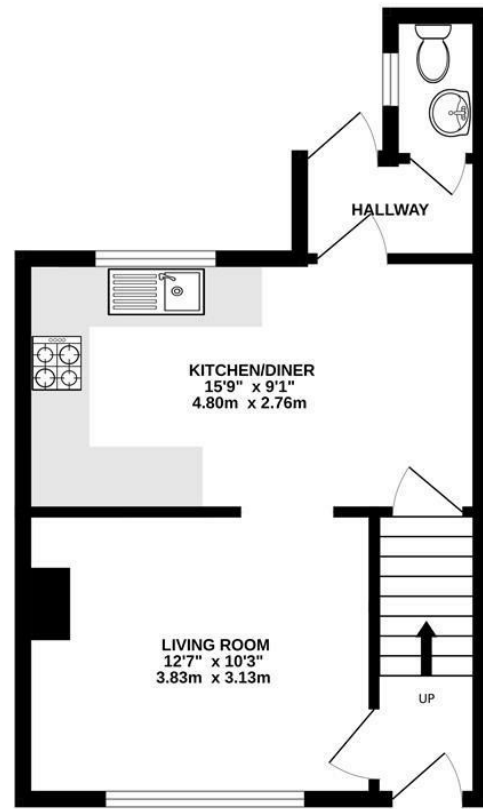
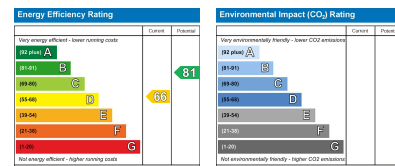


GROUND FLOOR
352 sq.ft. (32.7 sq.m.) approx.

1ST FLOOR
316 sq.ft. (29.4 sq.m.) approx.



TOTAL FLOOR AREA : 669 sq.ft. (62.1 sq.m.) approx.
Plans for illustration purposes only. Intending purchasers should check measurements personally.
Made with Metropix ©2026



24 St Andrews Road, Burgess Hill, RH15 0PQ

Price £299,000 Freehold

Let's Get Social

PSPhomes

@psphomes /psphomes www.psphomes.co.uk

VIEWING BY APPOINTMENT WITH PSP HOMES
54 Church Road, Burgess Hill, West Sussex, RH15 9AE. TELEPHONE 01444 250999

Much care is taken in the preparation of our particulars, but we cannot guarantee the information given is accurate.
Property details are issued a general guide only and may not form any part of an offer or contract. We recommend intending purchasers check details personally.

PSPhomes

@psphomes /psphomes www.psphomes.co.uk

24 St Andrews Road, Burgess Hill, RH15 OPQ

What we like

- * Spacious, well presented accommodation.
- * Large, sunny south facing rear garden.
- * NO ONGOING CHAIN.
- * Living room and separate kitchen/dining room.
- * Two double bedrooms.
- * Private driveway parking.

The Property.

This light and spacious two-bedroom mid-terrace home is set on a mature and popular residential road. The accommodation is well presented throughout and features a bright living room, a separate kitchen/dining room, and two generously sized double bedrooms.

A particular highlight is the long, established rear garden, offering excellent outdoor space. To the front, the property benefits from private driveway parking for two cars.

St Andrews Road remains a sought-after location, providing convenient access to Burgess Hill's comprehensive range of facilities, shops, leisure amenities, and transport links.

Accommodation.

On the ground floor, the entrance hall features a staircase rising to the first floor and leads through to the bright living room, complete with a feature fireplace display. From here, a doorway opens into the kitchen/dining room. The kitchen is fitted with a generous range of wall and base units, ample work surfaces, an integrated oven, hob and cooker hood, along with space and plumbing for further appliances. The dining area comfortably accommodates a table and chairs.

Beyond the kitchen is a useful rear lobby with a door opening onto the garden, as well as a cloakroom fitted with a modern suite.

The first floor offers two well-proportioned double bedrooms, both served by a contemporary shower room.

Gardens and Parking.

To the front of the property, a private driveway provides off-road parking for two cars. The rear garden is a particular feature, enjoying a sunny south-facing aspect and extending to approximately 130 feet in depth. It offers generous areas of lawn and decorative garden shingle, complemented by established planting beds. A gate provides access to one side.



Location.

St Andrews Road sits on the eastern edge of Burgess Hill, perfectly placed for families thanks to its proximity to highly regarded primary schools, including Oak Tree, just a short walk away. The town centre is easily accessible and offers a wide range of amenities, including a Waitrose supermarket.

Wivelsfield main line station lies approximately 0.6 miles from the property, with Burgess Hill station also within easy reach, providing excellent rail links. The Triangle Leisure Centre and the A23 link road are close by, offering convenient access for both recreation and commuting.

Burgess Hill is surrounded by beautiful countryside and charming villages, creating an appealing balance between town convenience and rural tranquillity. Road and rail connections to London, Brighton, Gatwick Airport, Lewes, and Haywards Heath are all strong, making this an ideal location for both local and long-distance travel.

Further Attributes.

Further attributes include gas fired central heating, double glazing and NO ONGOING CHAIN.

Finer Details.

Tenure: Freehold
Title Number: WSX125354
Local Authority: Mid Sussex District Council
Council Tax Band: C
Available Broadband Speed: Ultrafast (up to 1000 Mbps)

NOTE

Photography includes CGI furniture and fixtures in order to portray how individual rooms could be arranged.

